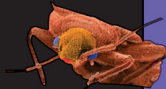


Permethrin Spray

PERMAKIL-25

R · e · a · d · y t · o U · s · e

- For two month control of Cockroaches, Waterbugs, Palmetto Bugs, Scorpions, Millipedes, Centipedes, Sowbugs, Pillbugs, Ants, Silverfish, Firebrats, Spiders, Crickets, Clover Mites, Cheese Mites, Granery Weevils, Confused Flour Beetles, Rust Red Flour Beetles, Drugstore Beetles, Meal Worms, Grain Mites and Cadelles.



Bedbug

**KEEP OUT OF REACH OF CHILDREN
CAUTION**

(See Back Panel for Additional Precautions)

Net Contents 32 FL. OZ. (1 Qt.) (946 ML.)

XXXXXXXXXX

TRUSTED SINCE 1926

BONIDE®

- Kills Bedbugs, Lice, Louse Eggs, Fleas, Ticks, Carpet Beetles, and Clothes Moths
- Indoor Application

ACTIVE INGREDIENTS:

Permethrin (CAS # 52645-53-1) ..	0.25%
OTHER INGREDIENTS:	99.75%
TOTAL	100.00%

Cis/trans ratio: min. 35% (+/-)
cis and max. 65% (+/-) trans

EPA Reg. No. 4- 393 EPA Est. No. 4-NY-1

PERMETHRIN SPRAY PERMAKIL 25 READY TO USE

**CONTROLS CARPET BEETLES, BED BUGS, CLOTHES
MOTHS, LICE AND LOUSE EGGS, ANTS, SPIDERS,
TICKS, AND OTHERS LISTED.**

**PROVIDES: 60-DAY CONTROL OF COCKROACHES,
FLEAS AND STORED PRODUCT PESTS.**

READ AND USE ACCORDING TO LABEL DIRECTIONS.

Store and transport in an upright position.

Buyer assumes all risks of use, storage or handling of
this product not in strict accordance with directions
given herewith.

EPA Est. No. 4-NY-1 EPA Reg. No. 4-393

Buyers Guarantee Limited to Label Claims.

©Bonide Products, Inc. All Rights Reserved

Bonide Products, Inc.
6301 Sutliff Road
Oriskany, NY 13424

Quart



DIRECTIONS FOR USE

It is a violation of Federal law to use this product in a manner inconsistent with its labeling.

Affix trigger, pump or other type sprayer to container for application. Do not transfer to another container.

SHAKE WELL BEFORE USING

INDOOR APPLICATION

For spot application only. Do not use as a space spray indoors. Application is prohibited directly into sewers or drains, or to any area like a gutter where drainage to sewers, storm drains, water bodies, or aquatic habitat can occur. Do not allow the product to enter any drain during or after application.

SURFACE SPRAYING: FOR 60-DAY (TWO MONTHS) CONTROL OF: COCKROACHES, WATERBUGS, PALMETTO BUGS, SCORPIONS, MILLIPEDES, CENTIPEDES, SOWBUGS, PILLBUGS, ANTS, SILVERFISH, FIREBRATS, SPIDERS, CRICKETS, CLOVER MITES, CHEESE MITES, GRANARY WEEVILS, RICE WEEVILS, CONFUSED FLOUR BEETLES, RUST RED FLOUR BEETLES, DRUGSTORE BEETLES, MEAL WORMS, GRAIN MITES AND CADELLES: Direct the spray into hiding places, cracks and crevices, and behind shelves and drawers. For *Silverfish*, spray bookcases. For *Ants*, spray trails, nests and points of entry.

TO KILL LICE AND LOUSE EGGS: Spray in an inconspicuous area to test for possible staining or discoloration. Inspect again after drying, then proceed to spray entire area to be treated. Spray from a distance of 8 to 10 inches. Treat only those garments and parts of bedding, including mattresses and furniture that cannot be either laundered or dry cleaned. Allow all treated articles to dry thoroughly before use.

TO CONTROL BEDBUGS: Spray mattresses lightly, particularly around tufts and seams. Take beds apart and spray in all joints. Treat baseboards, moldings and floors. Repeat treatment as needed.

INDOOR APPLICATION Cont.

TO CONTROL FLEAS (ADULTS AND LARVAE) AND TICKS (ADULTS AND LARVAE): Thoroughly spray infested areas, pet beds, resting quarters, nearby cracks and crevices, along and behind baseboards, moldings, window and door frames, and entire areas of floor and floor covering. Fresh bedding should be placed in animal quarters following treatment. Repeat treatment as needed. Allow to dry thoroughly before allowing pets to contact treated areas.

TO CONTROL CARPET BEETLES: Spray edges of carpeting and under carpeting and rugs. Make localized application to floor and baseboards. Spray directly into cracks, crevices and infested areas of shelving. Repeat treatment as needed.

TO CONTROL CLOTHES MOTHS: Remove any infested articles from storage, brush thoroughly, and air for several hours in sunlight, if possible. Apply spray liberally to empty chests, closets, bureaus and other storages directing the spray into cracks, joints and crevices. After airing, infested articles may be treated lightly, keeping nozzle at least three feet from fabric to avoid staining.

ON LIVESTOCK: To protect cattle (beef and dairy), goats, sheep, hogs and horses from *Horn Flies*, *Face Flies*, *House Flies*, *Mosquitoes* and *Gnats*. Apply a light mist sufficient to wet the surface of the hair. For face flies, spray face and head, but do not spray into eyes.

TO CONTROL STABLE FLIES, HORSE FLIES, AND DEER FLIES: Apply at a rate of 2 ounces per adult animal, sufficient to wet the hair thoroughly. Repeat treatment daily or at intervals necessary to give continued protection.

TO CONTROL BLOOD-SUCKING LICE: Apply to the infested areas of the animal, using a stiff brush to get the spray to the base of the hair. Repeat every 3 weeks if required.

TO CONTROL POULTRY LICE: Spray roosts, walls and nests or cages thoroughly. This should be followed by spraying over the birds with a fine mist.

TO CONTROL BEDBUGS AND MITES IN POULTRY HOUSES: Spray crevices of roost poles, cracks in walls, and cracks in nests where the *Bedbugs* and *Mites* hide.

STORAGE AND DISPOSAL

Pesticide Storage: Store and transport in an upright position. Store in a cool dry area inaccessible to children or pets.

Pesticide Disposal: *If partly filled* - Call your local solid waste agency for disposal instructions. Never place unused product down any indoor or outdoor drain.

Container Disposal: *If empty* - Nonrefillable container. Do not reuse or refill this container. Place in trash or offer for recycling if available.

PRECAUTIONARY STATEMENTS

HAZARDS TO HUMANS AND DOMESTIC ANIMALS

CAUTION: Wash thoroughly after handling and before smoking or eating. Avoid contamination of feed and foodstuffs. Remove pets and birds and cover fish aquaria before surface applications. Do not use on humans. Do not allow children or pets to contact treated areas until surfaces are dry.

Sensitivities may occur after using ANY pesticide product for pets. If signs of sensitivity occur, bathe your pet with mild soap and rinse with large amounts of water. If signs continue, consult a veterinarian immediately.

ENVIRONMENTAL HAZARDS

This product is extremely toxic to fish. To protect the environment, do not allow pesticide to enter or run off into storm drains, drainage ditches, gutters or surface waters. Applying this product in calm weather when rain is not predicted for the next 24 hours will help to ensure that wind or rain does not blow or wash pesticide off the treatment area.

For information on pesticide products (including health concerns, medical emergencies, or pesticide incidents) call the National Pesticide Information Center at 1-800-858-7378.